

# Walkabout TUNIC

PATTERN BY ERIN WEISBART,  
SAMPLE BY AMANDA CARESTIO

This loose-fitting tunic is the perfect light layer for spring. With a simple button closure and available in sizes XS through 7XL, this tunic provides ample coverage over a cami or a strappy dress or as a blouse.



## SUPPLIES

- 2½ yards of 45"-wide lightweight drapery fabric (such as rayon, challis, light linen or cotton lawn)
- Lightweight fusible interfacing
- Matching all-purpose thread
- Four 1"-diameter buttons
- Two ¾"-diameter buttons (optional)
- Hand sewing needle

## CUT

### Download the Walkabout Tunic

from [www.sewdaily.com/go/SNfreebies](http://www.sewdaily.com/go/SNfreebies) until April 30, 2022. Purchase the pattern at [www.sewdaily.com](http://www.sewdaily.com) after the expiration date; print.

**Determine the correct size based on** the chart. From the blouse fabric, cut one back pair, one front pair, two pockets (optional), two sleeves, one front facing pair and one back facing. Transfer all pattern markings onto the fabric wrong side.

**For the optional button tab, cut** two 2¼" x 7" rectangles from the blouse fabric.

## CONSTRUCT

*Use ½" seam allowances, unless otherwise noted.*

**From the interfacing, cut ¾"-wide strips.** Fuse interfacing to one back-facing long edge and to each front-facing angled edge on the wrong sides, following the manufacturer's instructions.

**With right sides together, stitch the** center-back seam from the upper edge to the small circle. Press open the seam, and then press the remaining center-back seam allowances 1" toward the wrong side.

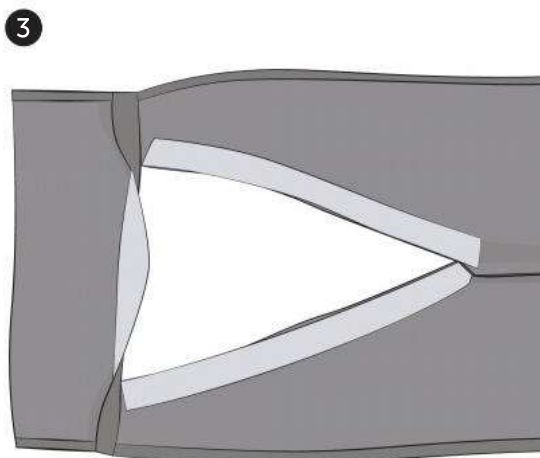
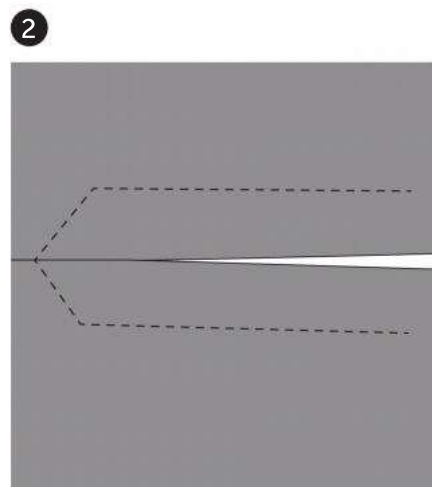
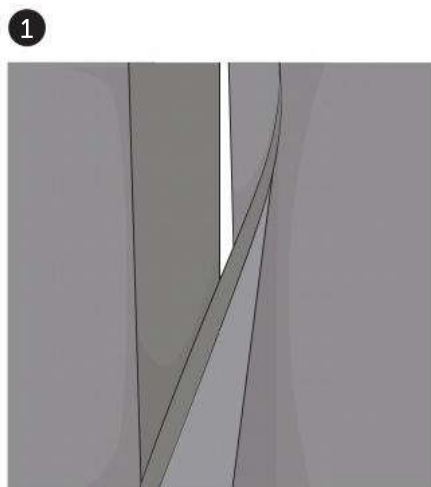
**Below the small circle, fold the** seam allowance raw edges ¼" toward the wrong side; press **(1)**.

Edgestitch the fold to secure the slit facing to the tunic back, bringing the stitching to a point 1" above the small circle **(2)**. If desired, serge- or zigzag-finish the remaining center-back seam allowances.

**With right sides together, align the** fronts and back along each shoulder seam, matching the notches; stitch. Serge- or zigzag-finish the seam allowances, if desired.

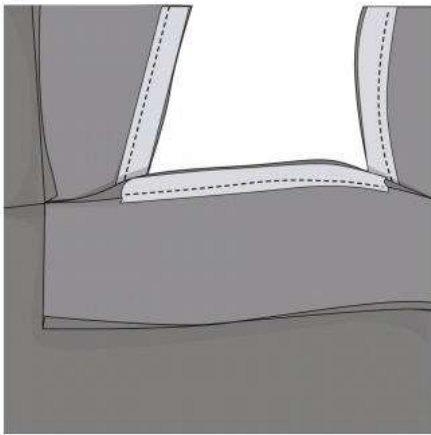
**With right sides together, align the** front and back facings, matching the notches; stitch.

**Fold the front-facing long straight** edges and the back-facing raw edges ¼" toward the wrong side; press **(3)**.





4



**With right sides together, align the tunic fronts with the front facings.** Ensure the facing shoulder seams are pressed toward the back. Stitch the front facings to the tunic front along the long straight edge and the angled edge, ending the stitching at the shoulder seam.

**Repeat to stitch the back facing to the back neckline,** ensuring the facing shoulder seams are pressed toward the front, beginning and ending where the front-facing stitching ends **(4)**.

**Snip the seam allowances at the shoulder seam to, but not through, the stitching.** Grade the seam allowances and clip the seam allowances at the center-front curve. Understitch the facings.

**Fold the facings toward the wrong side,** favoring the seam toward the wrong side; press, and then pin. From the wrong side, edgestitch the facings to the tunic along the ¼" folded edges.





**For the optional pocket, finish the** pocket sides and lower edge using a zigzag stitch or serger. Fold the pocket sides and lower edge  $\frac{5}{8}$ " toward the wrong side; press. Double-fold the pocket upper edge  $\frac{5}{8}$ " toward the wrong side; press. Edgestitch the first fold. With right sides facing up, place the pockets over the tunic front. Top-stitch the pocket sides and lower edge, backstitching at the pocket upper corners.

**With right sides together, pin each** sleeve into each tunic armhole, matching notches; stitch.

**Beginning at one sleeve lower edge,** stitch the sleeve underarm seam, pivot at the underarm, and then stitch the tunic side seam, ending at the small circle. Repeat to stitch the remaining underarm and side seam.

**Stitch the side slit facings per the** back slit facing instructions.

**Double-fold the sleeves and tunic** hem  $\frac{1}{4}$ " toward the wrong side; edgestitch the first fold.

**Select a buttonhole stitch on the** machine. Stitch buttonholes on the right front bodice along each buttonhole placement mark.

**For the optional button tab, fold** one strip in half lengthwise with wrong sides together. Stitch one long edge and one short edge using a  $\frac{1}{4}$ " seam allowance. Clip the corners and turn right side out. Press well, and stitch a buttonhole approximately  $\frac{3}{8}$ " from the finished end. Repeat for the remaining button tab.

**Place the blouse right side up on a** flat surface. With the sleeve folded in half, measure 7" in from the sleeve

hem and 1" down from the sleeve fold. Place the tab on the marking on the sleeve wrong side and stitch in place, working from the blouse interior (rather than the sleeve hem). Repeat to attach the remaining button tab.

**Hand or machine stitch buttons to** the left front at each button placement mark. Hand stitch buttons over the tab upper edge on each sleeve. 